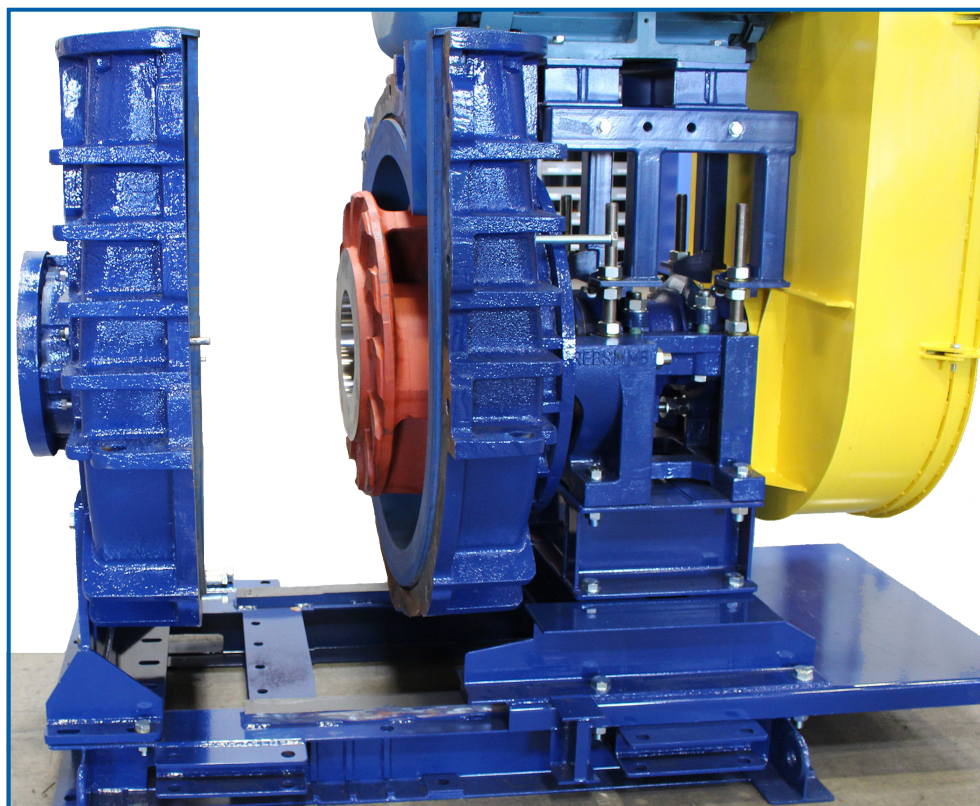


## STURDY SUPPORTS

Robust supports safely hold the suction side in place, eliminating the need to remove the suction pipe to maintain the pump.

## COMPATIBILITY

Compatible with all millMAX and slurry pump direct O/H drive arrangements on MMA - MMC power frames.



## BENEFITS

Easily change out wet end wear components

Suction piping does not have to be removed at any time to maintain wet end parts

Less downtime

Less time on maintenance, less maintenance costs



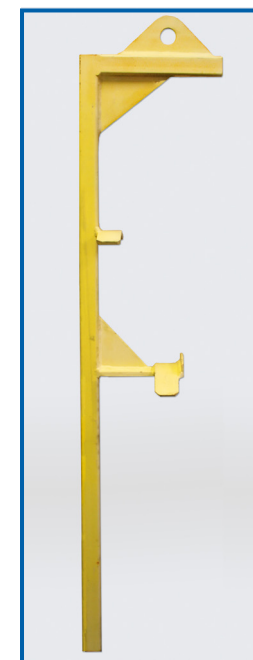
## HYDRAULIC RAM

A hydraulic ram is used to allow just one person to safely and quickly slide the base back and forth.

Hydraulic ram is common to both the belt tensioning system and back base pullout.

## LIFTING JIG

Lifting jig designed for safely removing wet end parts



Tucson, Arizona USA  
Tel: +1 520 744 8200  
E-mail: [krebs@flsmidth.com](mailto:krebs@flsmidth.com)

Neusiedl am See, Austria  
Tel: +43 2167 3345  
[krebseurope@flsmidth.com](mailto:krebseurope@flsmidth.com)

Queensland, Australia  
Tel: +61 7 5519 5700  
[krebsaustralia@flsmidth.com](mailto:krebsaustralia@flsmidth.com)

Western Australia  
Tel: +61 8 6258 4800  
[krebsaustralia@flsmidth.com](mailto:krebsaustralia@flsmidth.com)

Sao Paulo, Brasil  
Tel: +55-15-3416-7400  
[krebsbrasil@flsmidth.com](mailto:krebsbrasil@flsmidth.com)

Santiago, Chile  
Tel: +56 2 2463 8350  
[krebschile@flsmidth.com](mailto:krebschile@flsmidth.com)

Beijing P.R. China  
Tel: +86-10 8468 9100  
[krebschina@flsmidth.com](mailto:krebschina@flsmidth.com)

Chennai, India  
Tel: +91 44 4748 1000  
[krebsindia@flsmidth.com](mailto:krebsindia@flsmidth.com)

Manila, Philippines  
Tel: +63-2-687-9251  
[Krebs-Philippines@flsmidth.com](mailto:Krebs-Philippines@flsmidth.com)

Johannesburg, South Africa  
Tel: +27 (0)10 210 4750  
[krebsafrica@flsmidth.com](mailto:krebsafrica@flsmidth.com)

[www.flsmidthkrebs.com](http://www.flsmidthkrebs.com)

Copyright © 2016 FLSmidth A/S. ALL RIGHTS RESERVED. FLSmidth is a (registered) trademark of FLSmidth A/S. This brochure makes no offers, representations or warranties (express or implied), and information and data contained in this brochure are for general reference only and may change at any time.

rev: 11/7/2016 ljr-us